

**COMMITTED TO
EXCELLENCE POWER THE FUTURE
THROUGH INNOVATION**



WELCOME ABOUT US

Driven by a commitment to innovation, quality, and customer satisfaction, ALFA Innotech stands as a global leader in the design and manufacturing of advanced pumping and sealing solutions.

We proudly serve a diverse range of industries, including food and beverage, pharmaceuticals, chemicals, and water treatment. Our journey began as a regional enterprise with a clear vision: to create products that set new standards for performance and reliability. Over the years, we've evolved into a global powerhouse, broadening our product range and refining our expertise to align with industry trends and technological advancements.

We proudly serve a diverse range of industries, including food and beverage, pharmaceuticals, chemicals, and water treatment. Our journey began as a regional enterprise with a clear vision: to create products that set new standards for performance and reliability. Over the years, we've evolved into a global powerhouse, broadening our product range and refining our expertise to align with industry trends and technological advancements.



MISSION

Our mission is to deliver the most cost-effective and efficient sealing and pumping solutions to our customers.



VISION

We aspire to be globally recognized as a company of integrity, respect, and an unwavering commitment to excellence.

OUR SUPPORT



Innovation



Quality



Customer
Centric Approach



Integrity



Expertise



Reliability

01



Initial
Consultation

02



Customized
Solution
Development

03



Proposal &
Approval

04



Production

OUR STEP-BYSTEP APPROACH

05



Testing And
Quality Control

06



Dispatch

07



Feedback &
Improvement

08



Our Client's
Golden Words

OUR GOLDEN WORDS FOR ALFA



Operations Manager, Food & Beverage Company

"Working with ALFA Innotech has made a huge difference for us. Their pumps and seals have made our work more efficient and reliable. The team really knows their stuff and always delivers top-notch quality, making them a key partner for our business."

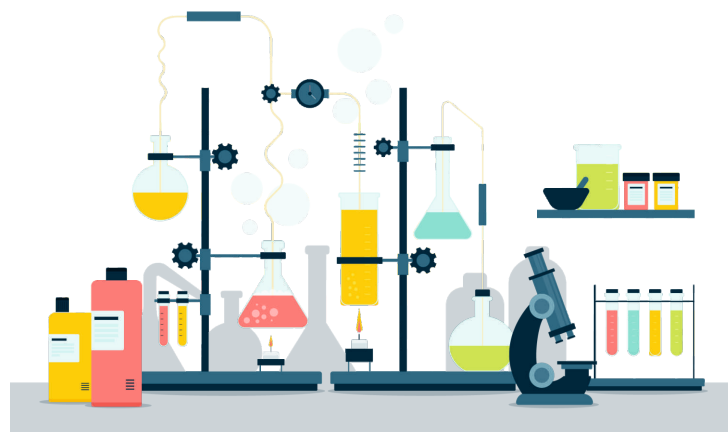
Head of Procurement, Pharmaceutical Company

"ALFA Innotech always maintains our high standards. Their products are advanced and robust even in tough conditions. Their customer service is excellent, always ready to help us find the right solution for our needs."



Engineering Director, Chemical Manufacturer

Our experience with ALFA Innotech has been nothing short of outstanding. Their innovative solutions have helped us achieve greater efficiency and cost-effectiveness in our processes. The professionalism and dedication of their team are truly commendable, making ALFA Innotech a trusted partner we can rely on.

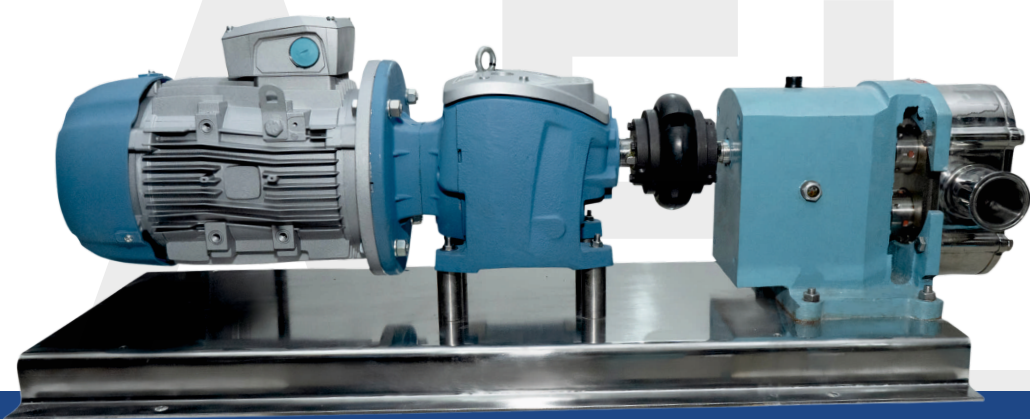




AEL Series

PUMP MODEL	PORT SIZE STANDARD	CAP (LPH) At Max. RPM	MOTOR HP Reqd.	MAX. RPM	MAX. PRESSURE
AEL-100	1" X 1"	4300	2HP	960	7 kg/cm2
AEL-150	1.5" X 1.5"	7500	3HP	960	7 kg/cm2
AEL-200	2" X 2"	16800	5HP	720	7 kg/cm2
AEL-250	2.5" X 2.5"	20000	5HP	720	7 kg/cm2
AEL-300	3" X 3"	33000	7.5HP	720	7 kg/cm2
AEL-350	3.5" X 3.5"	30000	7.5HP	520	7 kg/cm2
AEL-400	4" X 4"	39000	10HP	520	7 kg/cm2
AEL-450	4.5" X 4.5"	37000	10HP	400	7 kg/cm2

R NO.	PARTS	PARTS
01	Pump Chamber	SS-316
02	Tri-Lobe Rotor	SS-316
03	Top Cover	SS-316
04	Shaft	SS-316
05	Shaft Seal	Mech. Seal
06	Gear	EN-24
07	Casing	CI
08	Back cover	CI
09	Bearing Speller	CI
10	Bearing	SKF



AEL Series

AEL Series Pumps Application

Industry Pump		Sanitary Pump	
Oil		Dairy	Cream
Waste water		Bakery	Dressing
Sludge		Meats	Cosmetics
Chemicals		Canned Foods	Flavoring
Asphalt		Beverages	
Excretions		Candy	
Paints		Drugs	
Polymers		Syrup	

Typical Characteristics

Front Loading Seals	Handles Low & High Viscosity Products
Smooth Flow	Outstanding Operation & Efficiency
Gentle Product Handling	Simple Maintenance
Dry Running Ability	Hygienic Design
Efficient Transport and Dosing	Low Sound Level



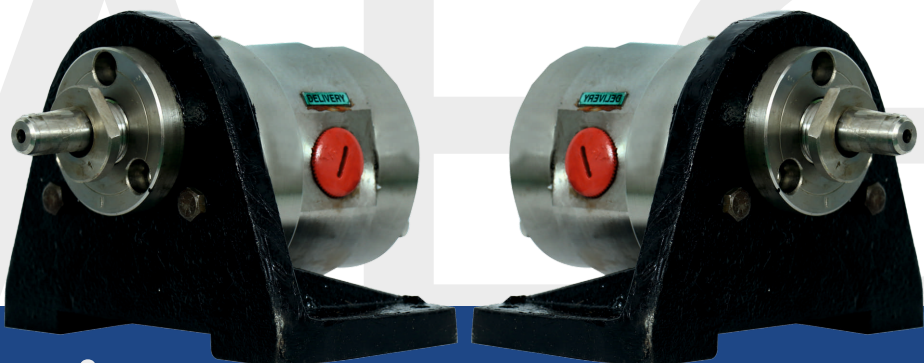
AEM Series

AEM Series Pumps Application

Food Industry	Beverage Industry	Pharmaceutical	Chemical Industry
Milk	Beer	Syrups	Detergents
Cream	Fruit juice	Pharma liquid	Dyes
Animal oil	Wine	Extracts	Cleansers
Flavoring	Soft drinks	Lotions	Paint
Vegetable juice		Cologne	Ink
Vinegar		Emulsions	
		Mouth wash	
		Water	

Configurations

Sanitary design ensures hygienic standards for liquid transfer	Designed for CIP(Cleaning in Place) and SIP(Sterilizing in Place)
Ease of assembly and disassembly for frequent from cleaning	Cost Effective maintenance
Better surface finish for less frictional losses and more efficiency	Motor shroud will ensure cleaning of any spillage
Adjustable base as per sanitary standards	



AEG Series

PUMP MODEL AGP	SUCTION & DELIVERY	CAPACITY AT 1440 RPM			MAX. PRESSURE KG/CM2	MOTOR H.P. REQD.	WT OF BARE PUMP (KG.)
		LPM	US	M3/HR			
AGP-025	¼" x ¼"	8.3	2.2	0.5	10 kg	0.75 HP	2.0
AGP-40	3/8" x 3/8"	16.6	4.4	1.0	10 kg	1 HP	3.0
AGP-50	½" x ½"	25	6.6	1.5	10 kg	1 HP	3.50
AGP-75	¾" x ¾"	33	8.8	2.0	10 kg	1.5 HP	4.50
AGP-100	1" x 1"	50	13.2	3.0	10 kg	2 HP	5.0
AGP-125	1 ¼" x 1 ¼"	100	26.4	6.0	10 kg	3 HP	7.0
AGP-150	1 ½" x 1 ½"	125	33	7.5	10 kg	5 HP	10.50
AGP-200	2" x 2"	150	39.6	9.0	10 kg	7.5 HP	20.50
AGP-200	2" x 2"	200	52.8	12.0	10 kg	7.5 HP	24.0
AGP-250	2 ½" x 2 ½"	250	66	15.0	10 kg	12.5 HP	35.0
AGP-250	2 ½" x 2 ½"	300	79.2	18	10 kg	12.5 HP	40

Features

Complete SS-316 (CF&M) Investment Casting
Nitrided Gears and Shafts for Longer Life
Teflon Coated Bush for Smooth Performance
Double Helical Gear Design from SS-100 Onwards
Optimum Internal Clearance for Accurate Capacity and Lower Power Consumpt

Application

Chemical Industry
Pharmaceutical Industry
Dyeing & Printing Houses
Paint Industry
Food & Beverages



CFP Series

Cfp Series Pumps Application

Acids, Fine chemicals , Dyes & Intermediates

Fruit juice, beer, wine, and other Beverages

RO water, CM water&acid descaling

Milk, butter milk, vegetable Oil, Mineral Oil etc.

Electroplating chemicals, Effluent Liquids, Acid Washing etc.

Pharmaceutical formulations, syrup, Food processing liquids etc.

Petrol, kerosene, Diesel and Other Petroleum liquids.

Configuration

Monoblock, Bare pump and coupled set with motor and Base frame

Monoblock pump in Single & Three Phase Single Phase up to 1HP only

Pumps with Flameproof Motor also available

All standard pump with closed impeller, semi open impeller available optionally

Mechanical seal & Pure Teflon Gland packing also available

Operating

CFP series pumps are centrifugal type and hence require priming before start up

Max. suction Lift with foot valve – 7 meters

Max. Capacity up to 2000 LPM.

Max. Operating Temp. 90 deg for std. pumps / 250 deg for high Temp type



SP Series

ACFP Series Pumps Features

Self Priming Action. No Need Of Foot Valves.

Sealing By Mechanical Seal

All Ss 316 Contact Parts

Compact Design And Efficient Operation

Pump Application

Useful For Unloading Of Chemicals, Syrups, Kerosene, Solvents Etc.

Textile Dyes, Ro Water Plant Etc.

For Pharmaceutical, Beverages & Dm Water

MODEL	SIZE	HP	RPM	HEAD (M)	2	5	10	15	20	25	30	35	40
SP-2	1"X1"	0.5	2900	CAPACITY LPM	36	31	27	23	18	13	08	-	-
SP-3	1"X1"	1	2900		54	49	45	42	38	32	26	20	13



AES Series

Technical Specification

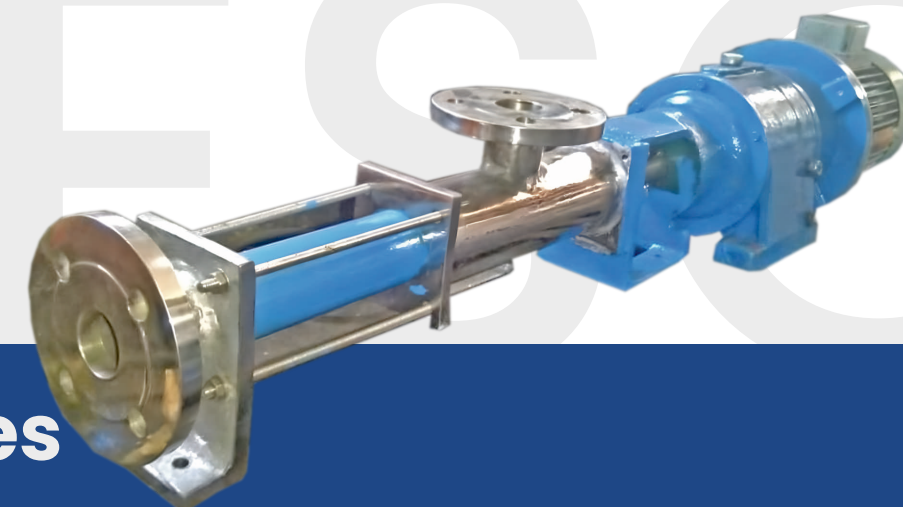
Viscosities up to 100,000 MPAS	4 Different Sizes
Impeller Ø From 125 To 200mm	Material of Construction : SS316/SS304

Key Feature

Ideal For Manually Cleaned Application Clean Out Of Place	Strong Structure
Simple Design-Few Parts	Customization To Suit the Need Best

Technical Specification

Food and Dairy	Brewery and Beverage Industries.
Pharmaceuticals	



AESC Series

Technical Specification

Capacities Up to 50M3/HR (220 GPM)	Easy Conversion
Smooth Connections	

Application

Effluent Treatment	Fruits & Vegetable Processing
Mining	Sweets & Baker's Wares
Chemical and Petrochemicals	Starch and Agriculture
Civil Engineering	Sugar and Distilleries
Paint & Lacquers	Paper & Cullulose
Fish & Meat Processing	Ceramics & Insulator
Beverage Industries	Cosmetics & Medicines
Dairy	Ship-Building & Railways



**CARTRIDGE TYPE
MECHANICAL SEAL**



**GRUNDFOSS
PUMP SEAL**



**CARTRIDGE TYPE
MECHANICAL SEAL**



**FRISTAM
MECHANICAL SEAL**



**CONICAL
SPRING SEAL**



**WAVY SPRING
SEAL**



**METAL
BELLOW SEAL**



HMT SEAL




**ALFA LAVAL
GM SEAL**

Mechanical Seal



IDMC SEAL

CONTACT US

 E- 114, Satya Industrial Park -2, Nr. Ved-2 Ind. Park,
Bhuvaldi Road, Kathwada, Ahmedabad - 382430,
Gujarat , India

 +91 98986 88570 | +91 93271 16057

 info@alfainnotech.com

 www.alfainnotech.com



Scan For Address



Scan For Website